

MEDINOX SERIES

Toilet brush holders



ES0965C
Bright finish



ES0965CS
Bright finish

General Description

- Toilet brush holder, Stainless steel AISI 304.
- Suitable for wall mounting or floor standing.
- Suitable for the hotel sector, for fitting in the bathroom hotel rooms.
- Model suitable for public use.
- Bottom lid non removable.

Components & materials

- **ES0965C:** Stainless steel AISI 304 body, 0.04" (1mm) thick bright finish. Mounting on the wall means by a flange with two screws.
- **ES0965CS:** Stainless steel AISI 304 body, 0.04" (1mm) thick satin finish. Mounting on the wall means by a flange with two screws.
- **HANDLE:** Stainless steel AISI 304, 0.04" (1mm) thick, bright or satin finish.
- **COVER:** Stainless steel AISI 304, 0.04" (1mm) thick, bright or satin finish.
- **INNER ROD:** Stainless steel AISI 304, 1/32" (0.8 mm) thick, bright or satin finish.
- **BRUSH:** Sisal fiber.
- **BOTTOM LID:** Made in black plastic, non removable.

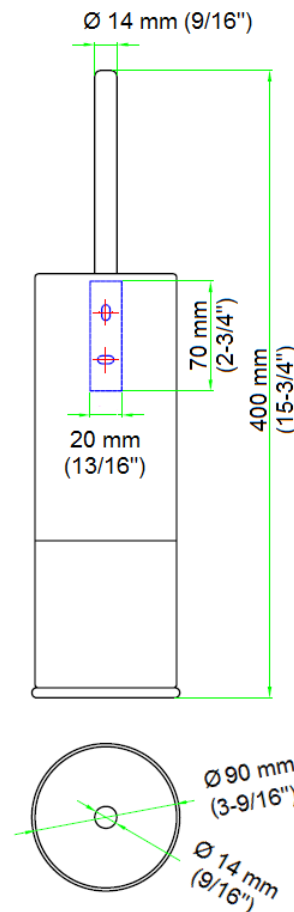
Technical Specifications

Dimensions 15-3/4x3-9/16x3-9/16" (400 x 90 x 90 mm)

Body thickness 1/32" (1 mm)

Body diameter Ø 3-9/16" (90 mm)

Dimensions



Dimensions ± 4%

OPERATION

No specific instructions for use.